



Magdalenazaal (MaZ) Bruges Technical sheet

B R U
G G E

CULTUUR
CENTRUM
BRUGGE

1. Table of contents

1. Table of contents.....	1
2. How to get there	3
3. Contacts	3
4. General	4
5. Safety	4
6. Accessibility for the disabled	5
7. Loading and unloading.....	5
8. Theatre and attributes	6
9. Fly-bars	8
10. Doekenlijst.....	Fout! Bladwijzer niet gedefinieerd.
11. Direction	Fout! Bladwijzer niet gedefinieerd.
12. Electricity.....	9
13. Light	10
14. Sound.....	12
15. Rigging	14
16. Video.....	14
17. Stageplan.....	15

2. How to get there

- **Entrance artists and tech**
 - Magdalenastraat 27, 8200 Bruges
- **Loading and unloading zone**
 - At the parking lot, large gray doors
 - Also parking actors, musicians.
 - Dimensions exterior doors: 2,76m wide, 3,7m high
- **Route**
 - From the E40 to Bruges. Exit 8 direction Sint-Michiels, via the expressway (N31). Take the exit towards Zedelgem. Turn right at the intersection with the Torhoutse steenweg (N32). Continue the road until the deminerslaan (about 800m, at large sign with free parking) turn right there. After this, immediately turn left and continue the road until the magdalenazaal.
- **Parking**
 - There is a large, free, parking at the magdalenazaal.

3. Contacts

- **Office CC Brugge:**
 - Sint-Jakobsstraat 20, 8000 Bruges 050/44 30 40
- **Director CC Brugge:**
 - Filip Strobbe 050/32 45 45
- **Head of technology, infrastructure and operations:**
 - Lieselot Decoster 050/44 66 20
+32 (0)477/788 380
lieselot.decoester@brugge.be
- **Responsible evening programming CC Bbackge:**
 - Peter Roose 050/44 30 54
- **Coordinator theatre tech:**
 - Jonas Sierens 050/32 45 16
+32 (0)477/89 65 02
jonas.sierens@brugge.be
- **Expert theatre tech:**
 - Robbert De Neve 050/32 45 19
+32 (0)476/60 28 80
robbert.DeNeve@brugge.be
- **Venue rental**
 - Virginie Goethals 050/44 30 55
cultuurcentrum.zaalverhuur@brugge.be
- **Technical agreements venue rental**
 - Jonas Sierens 050/32 45 16
+32 (0)477/89 65 02
jonas.sierens@brugge.be
- **Responsible reception team**
 - Isabelle Cattoor 050/44 66 32
Isabelle.cattoor@brugge.be

4. General

- Multipurpose venue with its own programming, operated by CC Brugge
- Year of construction: 2001
- Retractable grandstand with 381 seats. If retracted 650 standing places.
- Total venue dimensions
 - Length: 29,2m of which 27m usable
 - Width: 23,7m
 - Height: 9.8m, of which 8.25m free height under the fly bars.
- Wheelchairs
 - Places in the venue available if agreed in advance with the box office.
- 2 artist dressing rooms
 - Each with 4 dressing tables with mirror and lighting
 - 2 showers
 - 1 toilet
 - Backstage access to stage
- Large dressing room/artist foyer
 - Small kitchen. With microwave, 2 hobs, refrigerator, drinking water dispenser (flat, sparkling and cooled)
 - Intercom between FoH, dressing rooms and technical office.

5. Safety

- Any use of smoke, open flames, explosives, ammunition and explosion mechanisms is prohibited. Exceptions are only allowed on the advice of the safety coordinator and prevention advisor of the City of Bruges.
- Fire-resistant treated cloths, décor elements, etc. are only accepted if they are accompanied by a certificate, which is best sent with the technical sheet.
- Cultural centre cannot be held responsible if the material introduced (décor, electrical equipment, etc.) does not meet the legal safety criteria and therefore a performance cannot take place.
- Smoking is not allowed in the building.
- Escape routes: it is forbidden in the hall and in its access and exit routes to place loose seats for the spectators or other obstructing objects (e.g. Cameras on tripod).
- Use and means: the operation of the traits and access to the portal bridge is only done by appointed persons of the Cultural Centre.
- Everything that is hung in must be secured by steel cables or chains.
- The Cultural Centre declines any responsibility in the event of accidents resulting from improper use of the infrastructure by third parties.
- It is mandatory to wear safety shoes during the construction and dismantling on stage.
- (Emergency) exits, extinguishing agents and emergency controls must be accessible at all times and must therefore not be obstructed by furniture or equipment (speakers, décor, props, flight cases, tables, chairs,...)
- All safety risks are evaluated per performance and Cultuurcentrum Brugge and the theatre technicians on duty reserve the right to ban unsafe items at all times.
- The recent Flemish regulations on noise standards for music activities to protect the public (hearing damage) must be respected. The Cultural Centre has a decibel meter (10easy).
- **Maximum noise level: 95dB(A) LAeq_{15min}**

6. Accessibility for the disabled

- **Report in advance**
 - Motor impairment
 - 4 reserved places (ground floor) for wheelchair users.
 - Visual impairment
 - Place reservation in front.
- **Parking for the disabled**
 - 2 adapted parking spaces on the side of the building.
- **Accessibility for the disabled**
 - All public spaces, artist's dressing rooms and foyer are located on ground floor.
- **Toilet**
 - 1 adapted toilet for the disabled.

7. Loading and unloading

- **Loading and unloading area**
 - Along the left side of the building through the large gray doors.



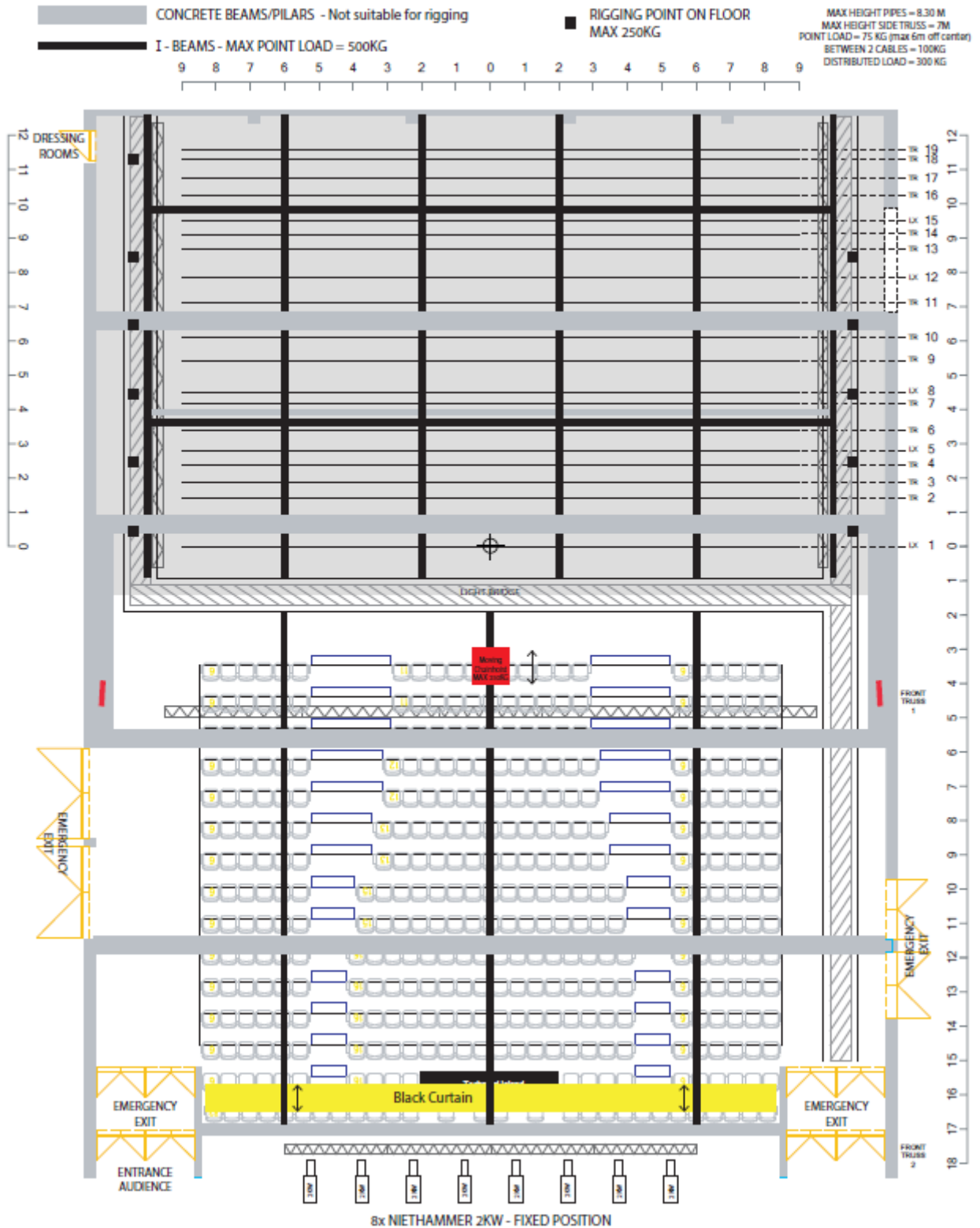
Photo1: Loading and unloading zone

- Access to the venue runs through the storage place to stage.
 - Dimensions of exterior doors:
 - 2,76m width
 - 3.7m height
 - Dimensions of the gate opening between scene and storage space
 - 3m width
 - 4m height
- **Transport**
 - Pallet truck: max. 2000kg
 - 1x flat cart

8. Theatre and attributes

- Floor room: concrete floor
- Floor stage: wooden floor with 4 hydraulically adjustable parts
 - Central: 2 stages of 10.8m wide and 4.5m deep.
 - Outsides: 3,65m wide and 9m deep
 - Maximum height: 1m
 - Full dimensions height adjustable stage: 9m depth, 18.15m wide.
- Fly-bar operation with simple control panel on stage left.
- Intercom:
 - Clear-com between: FoH, scene stage left and stage right, walkways, dressing room 1, dressing room 2, kitchen, technical office
 - Clear-com HME base station DX100 + 4 wireless beltacks BP200 + headsets
- Risers 12 pieces:
 - L 200cm x B 100cm
 - Legs
 - 20cm: 28 pieces
 - 40cm: 48 pieces
 - Adjustable between 60 and 100 cm: 50 pieces
 - Stairs up to 80cm
- Ladders
 - Extendable ladder
 - Folding ladder
- Genie lift
 - ALP 1 person genie
 - Max. working height: 9,3m
 - Max. 160kg
- Ballet floor (extra rental price)
 - Standard ballet floor
 - Studio ballet floor
 - 3mm thickness
 - Only on special request for dance productions

MagdalenaZaal Brugge



9. Fly-bars

- Electrically operated fly-bars
 - 19 in total
 - 14 décor fly-bars
 - 5 fly-bars for light (pre cabled)
 - Max height: 8,3m
 - Max load:
 - Max. 300kg evenly distributed load
 - Max. 100kg under cable

NUMBER	DISTANCE TO LIGHT BRIDGE	DISTANCE TO PREVIOUS FLY-BAR	TYPE OF FLY-BAR
1	1 m	-	light
2	2 m 42	142 cm	decor
3	2 m 87	45 cm	decor
4	3 m 47	60 cm	decor
5	3 m 82	35 cm	light
6	4 m 42	60 cm	decor
7	5 m 17	75 cm	decor
8	5 m 62	45 cm	light
9	6 m 52	90 cm	decor
10	7 m 22	70 cm	decor
11	8 m 17	95 cm	decor
12	8 m 97	80 cm	light
13	9 m 67	70 cm	decor
14	10 m 22	55 cm	decor
15	10 m 62	40 cm	light
16	11 m 37	75 cm	decor
17	11 m 92	55 cm	decor
18	12 m 47	55 cm	decor
19	12 m 74	27 cm	decor

- Side fly-bar
 - Truss 30/30 stage left and stage right
- Portal
 - Fixed portal
 - 13,5m from back wall

10. Curtain list

OMSCHRIJVING	AANTAL	HOOGTE	BREEDTE	KLEUR	STOF
Leg	12 (6 sets)	8m (7m)	4,50m	Black	Velvet
Border	2	1,5m	14,5m	Black	Velvet
Fond	1 (5 legs)	8m (7m)	18m	Black	Velvet
Projection	1	6m	14m	White	PVC
Filmdoek (verplaatsbaar) geen retro	1	Verstelbaar max 6m	6m	White	

11. FoH

- Open FoH at the top of the grandstand.
 - 4m x 1m
- Patch to stage
 - Network
 - DMX
 - Audio

12. Electricity

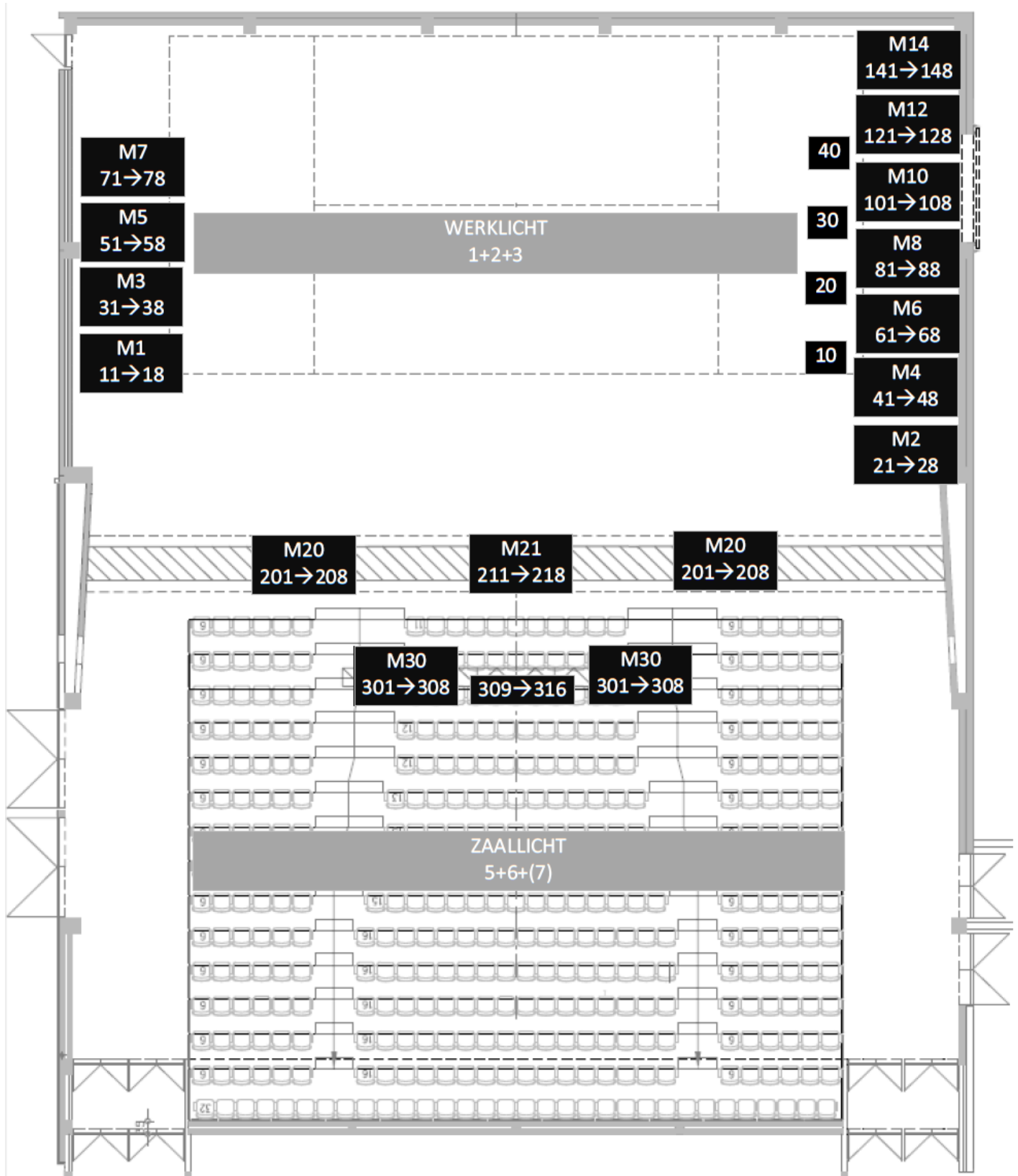
- CEE 400V/63A (3p+N+A) on stage left for audio
- CEE 400V/125A (3p+N+A) on stage left for light
- CEE sockets 16A/220V on walkways and fly bar, connected via patch panel in storage
- Possibility to place an external power generator with connection outside the building with transit CEE 400V/125A to the room on stage left
- Power supple
 - 125a link out
 - 2x 63A out
 - 4x 32A out
 - 2x 16A out
 - 24x sockets schuko type F (edge earth)
 - 8x sockets CEE
 - 4x han16 (linked to schuko/CEE)
 - 4x han10 (linked to schuko/CEE)

13. Light

- Light Desk (DMX-512)
 - Chamsys MQ500
 - 15 playbacks
 - Extensions:
 - Playback wing (24 playbacks)
 - Stadium wing (15 playbacks, 15 executes en touchscreen)
- Hazer
 - Swefog ultimate 300
 - Unique 2.1
- Dimmers
 - 15x 8 channel multi cables
 - 4x on stage right
 - 7x to stage left
 - 2 x portal
 - 2x proscenium
 - 4 loose CEE cables stage left
 - 6x 5kW mobile dimmer: ADB type Memopack 30
- DMX booster/merger
 -
- Tripods and ballet towers
 -

Mobile light

SOORT	VERMOGEN (kW)	MERK	TYPE	AANTAL	LENS	ZOOM	IRIS	BARNDOOR/MESSEN
Conventioneel								
PC	2	ADB	C201	6	Clear	8°-58°		Barndoors
	1		C203	15	Pebble	8°-58°		
			C103	37	Pebble	7°-61°		
Fresnel	2		F201	8	12-51°			
	5		SH50	3				
Profiel	1,2		DW105	36	15-38°	ja	ja	Shutters
		DVW105	8	38-57°				
ACP	1	HF 1001 ass	18					
PAR 64	1	THOMAS	CP60	17*	VN	Amount can vary depending on needs.		
			CP61	36*	N			
			CP62	33*	MFL			
Intelligent								
Spot		Clay Paky	QWO800	4		11-55°		
Wash			B-eye K10	12		4-60°		



14. Sound

- **Sound desks**
 - Yamaha CL5
 - Yamaha QL1
 - Yamaha M7CL-48
- **Sound system venue**
 - 4x D&B C7 top
 - 6x D&B C7 Sub
 - 2x D&B C6 center fill
 - 2x D&B max (fixed at back of room for surround)
 - Flight system for top cabinets available
- **Sound system monitoring**
 - 8x D&B max
- **Amplifiers**
 - 6x D&B D12
 - Used for FoH and monitors
 - 5x QSC RMX 1850
- **Stagebox**
 - Rio3224-D2
 - Rio1608-D2
 - 48ch analog patch
- **Microphones**
 - Shure
 - 8x SM-57
 - 8x SM-58
 - 4x beta 57
 - 5x beta 58
 - 2x PZM beta 91
 - 1x beta 52
 - Sennhieser
 - 2x e-606
 - 4x e-604
 - 2x MD421
 - AKG
 - 3x C1000
 - 1x D-112
 - 2x C416
 - 2x C419
 - 2x C414 XL-II (stereoset)
 - Audix
 - 1x Dumset
 - D6
 - D4
 - 2x D2
 - I5
 - ATM
 - AT-4041 condensator

- Neumann
 - 2x KM184 (stereoset)
- Rode
 - NTG
- Electrovoice
 - 1x RE20
- **Wireless microphones**
 - Receivers
 - 4x Shure QLXD
 - 1x antenna splitter
 - 2x flag antenna
 - Sender
 - 4x Shure QLXD1 handheld
 - 2x Shure QLXD1 beltpack
 - 4x Shure beta58 (for handheld)
 - 2x beta 87C
 - 2x headset
- **DI boxes**
 - 6x active BSS AR-133
 - 4x Behringer DI ultra 100
 - 4x Radial Pro D2
 - 1x Stageline
- **Stands and clamps**
 - 10x stand KM 210/6 regular/short boom
 - 10x stand KM 210/8 regular/long boom
 - 4x KM256 short/short boom
 - 3x table stand JB-50

15. Rigging

- **Softsteels 2 ton**
 - 8x 0.5m
 - 8x 1m
 - 8x 1.5m
 - 8x 2m
- **Ratchet straps (not for lifting)**
 - 6x 6m
- **Swivel clamps/cheeseborough clamps**
- **Reutelingers**
 - 12x max 90Kg 8m

16. Video

All lenses are shared with the other venues of CC Brugge. Check availability in advance.

- **Beamers**
 - 1x Panasonic PT-RZ970 (10.000 ANSI lumen laser projector, in fly frame)
- **Lenses**
 - 1x DLE50 (Fixed 0.8)
 - 2x DLE100 (1.3-1.8)
 - 3x standard zoom lens (1.8-2.4)
 - 1x DLE250 (2.3-3.6)
 - 1x DLE350 (3.6-5.5)
 - 2x DLE410 (4.7-8.9)
- **DVD players**
 - 2x Denon DVD1710
- **Cables**
 - BNC
 - VGA
 - HDMI
 - HDMI over UTP
 - VGA to HDMI

17. Stageplan

